



San Francisco Bay Regional Dredged Material Management Plan (RDMMP)

NAVIGATION MISSION: Maintain safe and efficient navigation in San Francisco Bay in support of commerce, implementing beneficial use of dredged material (BUDM) to the extent feasible to meet the Chief of Engineers' January 2023 vision to achieve 70% BUDM by 2030. As upland BUDM placement sites become more limited in the next few years, there is a need to develop a San Francisco Bay-wide long-term plan for placing dredged material. Under US Army Corps of Engineers (USACE) policy, this plan is called a Dredged Material Management Plan (DMMP). The Regional DMMP (RDMMP) planning effort includes the 11 federally authorized channels in or adjacent to San Francisco Bay.

PURPOSE: The USACE requires that all its federally maintained navigation projects identify sufficient dredged-material placement capacity for a minimum of 20 years. The DMMP is a detailed assessment of dredged-material placement alternatives for authorized projects. The RDMMP estimates future maintenance dredging volumes, evaluates management alternatives, and establishes the "Federal Standard" base plan. A supporting National Environmental Policy Act (NEPA) document will accompany the RDMMP.

Key drivers behind the need to develop an RDMMP plan include the following:

- Uncertainty with future placement site availability
- Changing environmental and climate conditions
- Increased BUDM opportunities in line with USACE policy

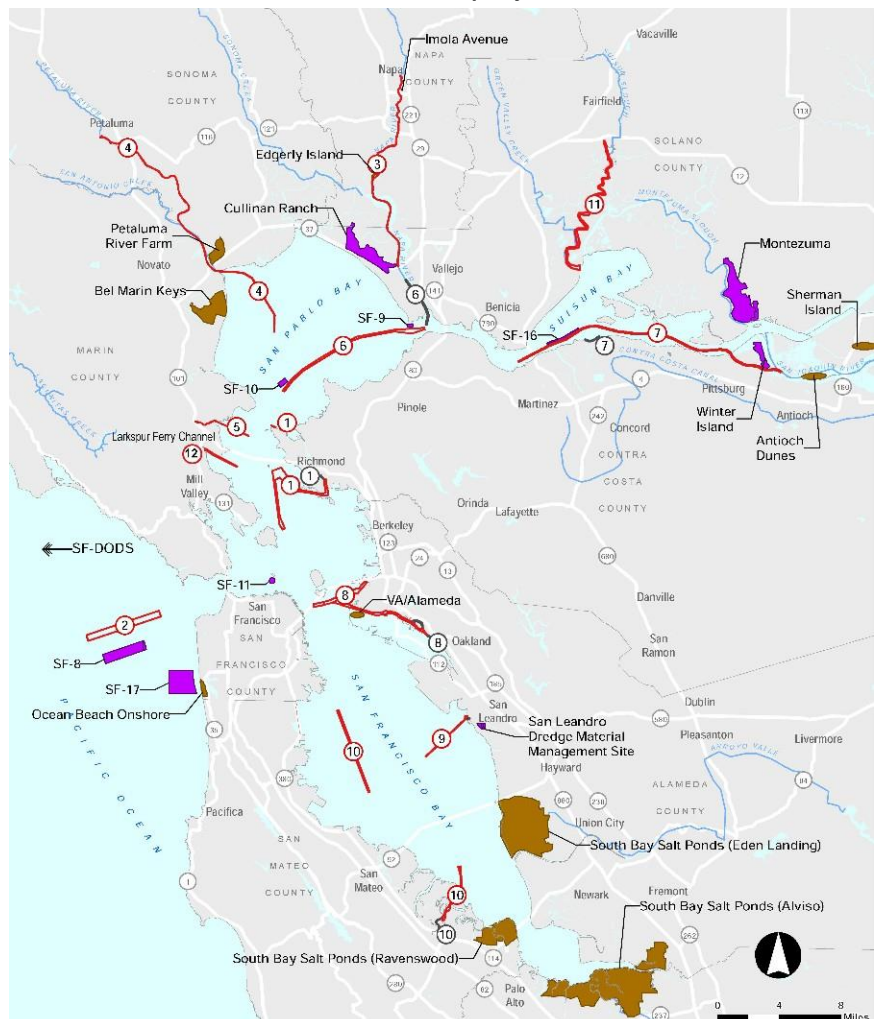


Figure: Channels (red) and placement sites (purple; brown) in the San Francisco Bay Delta Region. San Francisco Deep Ocean Disposal Site not shown.



FACT SHEET

San Francisco Bay - Regional Dredge Material Management Plan (RDMMP)

PROJECT UPDATE: The study is currently in the plan formulation process, in which data are inventoried and future conditions are forecast; alternative actions are developed, analyzed, and compared; and a plan is selected. The Project Delivery Team (PDT) is currently exploring three conceptual alternative formulation strategies: 1) maximize beneficial use (e.g. by taking all suitable dredged material to upland or beneficial use placement sites, including novel Engineering with Nature and storage approaches such as strategic shallow-water placement and aquatic transfer; 2) least-cost placement options for each federal navigation channel; and 3) regionally optimized least-cost combination of placement options (which may achieve more beneficial use than individual least-cost options via a coordinated approach and leveraging economies of scale). The study will also involve continued regional stakeholder collaboration to identify and consider additional alternatives and compare and evaluate those alternatives. The intent of this collaborative process is to identify and consider novel ways to maximize beneficial use at lower cost to adapt to climate change and protect low-lying and vulnerable communities while maintaining federal navigation channels for critical maritime commerce in support of a robust regional and national economy.

Concurrently with this plan formulation process, the PDT is working with the San Francisco Estuary Institute, USACE Engineer Research and Development Center (ERDC), and the Institute for Water Resources (IWR) to conduct modeling and analysis efforts to identify priority locations for beneficial use in the near- and long-term, and to quantify comprehensive benefits (i.e., environmental, social, economic) of new placement sites and methods. These efforts are a response to data gaps identified by regional stakeholders including local, state, and federal resource management agencies, ports, and the dredging industry (collectively referred to as the Interagency Working Group). The RDMMP PDT is targeting a recommended plan by 1st quarter FY 2024. Preparation of a NEPA document would occur in FY24. The intent is to have an approved regional base plan for all 11 projects for the FY 2025 – 2034 O&M dredging program in time for the 2025 dredging season. Subsequent RDMMP updates would be implemented (per WRDA 2020 Section 125 guidance) and as new placement sites come online.

Project website: <https://www.spn.usace.army.mil/Missions/Projects-and-Programs/Regional-Dredge-Material-Management-Plan/>

U.S. ARMY CORPS OF ENGINEERS - SAN FRANCISCO DISTRICT
450 Golden Gate Ave., San Francisco, CA 94102
www.spn.usace.army.mil